



 Friendship VillageSM
ASSISTED LIVING
& MEMORY CARE
Serving Seniors. Honoring Christ.

The independent lifestyle you want, with all the care you need.

At Friendship Village Assisted Living & Memory Care we tailor our services to your needs.

You'll receive just the right amount of assistance with daily activities, so you can remain as independent and active as you want to be.

Our mission is to enhance your independence, help you live a vibrant life and open the door to endless possibilities. To keep you well, we provide excellent health services and many social events and community activities.

Why choose Friendship Village Assisted Living & Memory Care?

- *Unrivaled peace of mind, with a 24-hour licensed nurse on site*
- *Inclusive pricing model, that doesn't escalate as needs increase, which keeps costs clear and easy to manage*
- *Backed by Friendship Village's more than 45+ years experience in senior living*





Meeting your needs. On your terms.

We understand that no two residents are the same. Our community is designed to meet the needs of our residents in many ways. Friendship Village is the only known community that offers three specialized levels of care:



Assisted Living

Built on the 45+ year reputation of Friendship Village, offering you individualized support services all in the comfort of your private apartment. A nurse on site 24/7 and an inclusive pricing model keeps costs clear and manageable.



The Bridge

Connects our Assisted Living & Memory Care and is home to a transitional neighborhood providing oversight to those who may need future memory care. The Bridge includes 15 apartments managed by dedicated specially trained caregivers.



Memory Care

A warm, secure environment—including 15 private suites—that provides the area's best services for treating and managing memory loss. With the highest caregiver ratio of all care levels, we take the nationally recognized Montessori Inspired Lifestyle® approach to best serve each resident's unique treatment path to strengthen and preserve their memories.



The Friendship Village Assisted Living & Memory Care Experience

With several private apartment floor plans available, residents enjoy all the comforts of home without the worry of upkeep and maintenance.

Whether it's having intimate conversations by the fireplace, sipping lemonade on the balcony, reading in the courtyard, or simply enjoying the day on our beautiful grounds, the possibilities here are endless!





Assisted Living & Memory Care Services Include:

- Personalized care plan
- Medication management, including diabetes management
- Licensed nursing on site 24/7
- Assistance with showers and dressing
- Restaurant-style dining served at breakfast, lunch and dinner
- All residential maintenance
- Weekly housekeeping
- Daily bed making and trash removal
- Weekly laundry services for towels and flat linens
- All utilities, including phone service
- Basic cable television service (over 80 channels)
- Wireless access (WiFi)
- 24-hour emergency pull-cord service
- Wide array of social and recreational activities and outings
- Scheduled transportation and shuttles
- Parking available
- Chaplain and regular worship services
- On-site security 24/7
- Library
- Regular exercise classes

Dynamic Dining at Every Turn

Enjoying a delicious meal with family and friends is one of life's simple pleasures. From a comforting, hot breakfast to a vibrant, crisp salad for lunch, Friendship Village Assisted Living & Memory Care offers a wide variety of menu options. With appealing chef's specials and our daily array of entree choices, our restaurant-style dining assures there is something for everyone.

A reservable private dining room and other intimate gathering areas are also available to our residents and their families for entertaining.



“ I believe I’m living in the Cadillac of all assisted living communities in the Midwest. The food is excellent, the entertainment is professional, and the staff is wonderful. I love living here! ”

Victor | Resident



The Right Space for You

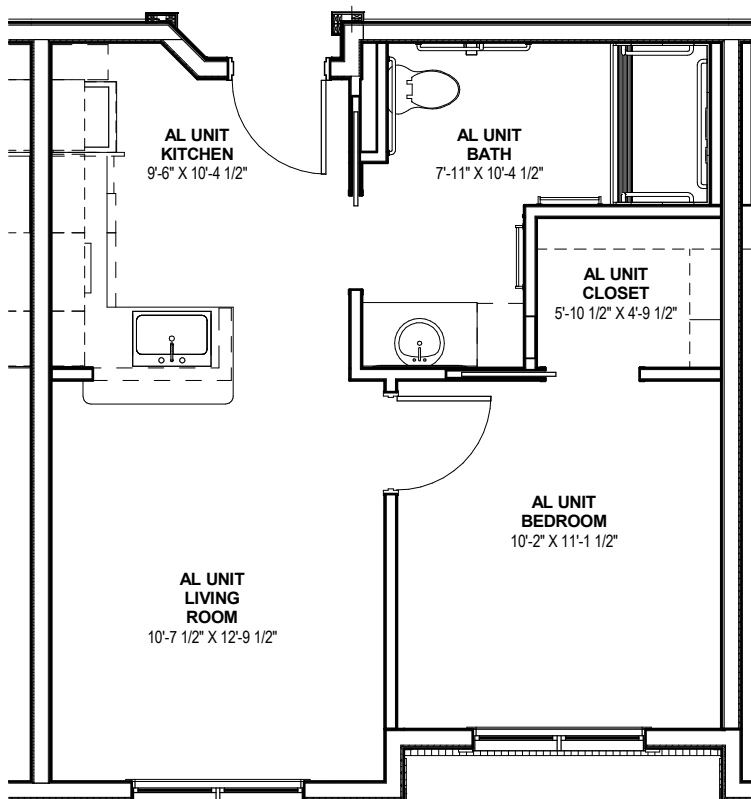
With four apartment styles to choose from, we'll help make sure your new home suits your needs and lifestyle perfectly.

“ In the brief time Mom has been at your community, she already feels cared for and comfortable. The entire staff has made us all feel welcome and part of the FV Assisted Living & Memory Care family. Mom enjoys participating in the daily exercise classes, Wednesday Bible study and the various fun events and activities. And Mom loves the convenience of three delicious meals in the dining room. The entire staff has smoothed the transition as we adjust to a new environment along with Mom. After investigating several assisted living facilities, we chose Friendship Village Assisted Living & Memory Care as the best fit for Mom, and we are delighted that she is here. ”

Pat and Gil | Family Member

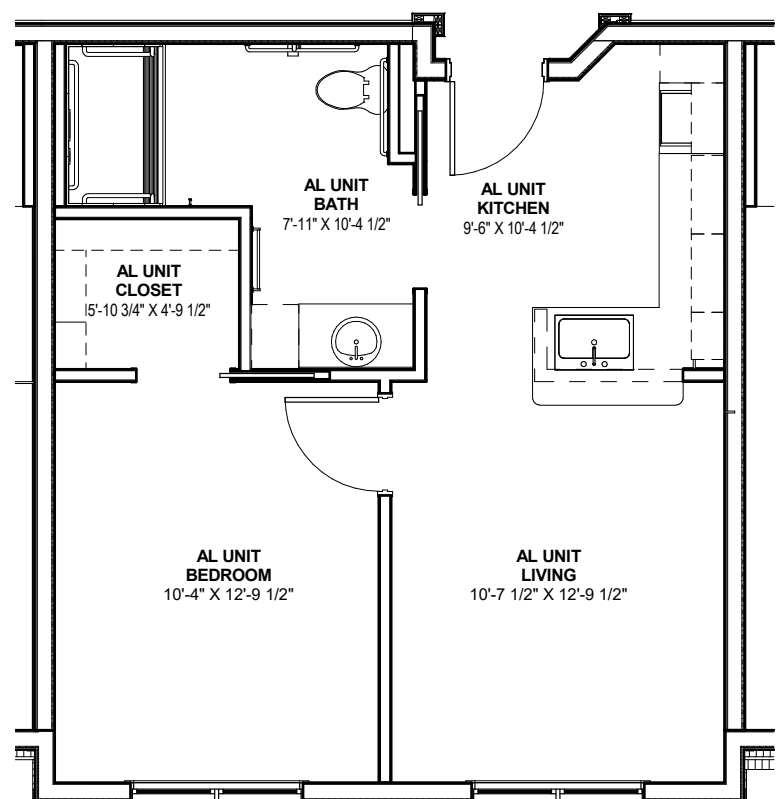
Bogart

1 Bedroom Apartment
(478 sq. ft.)



Douglas

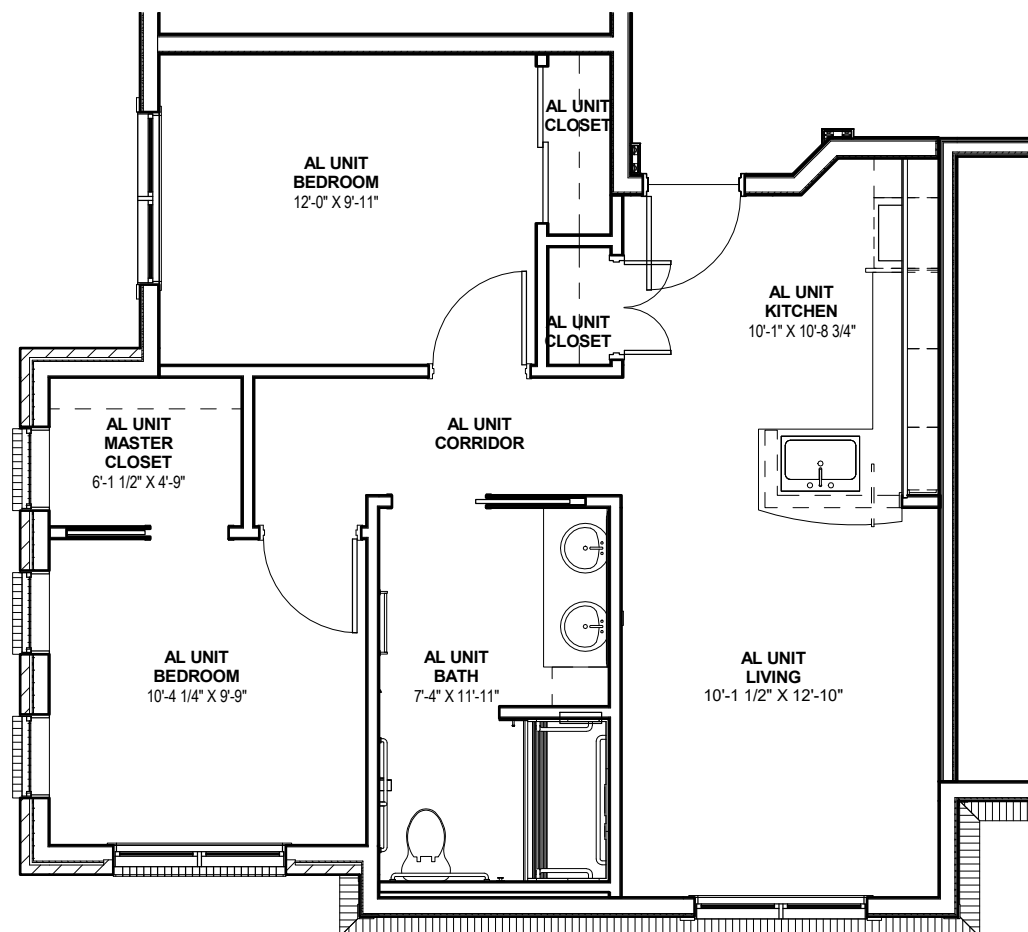
1 Bedroom Apartment
(478 sq. ft.)





Cooper

2 Bedroom Apartment
(655 sq. ft.)



We've built the future of Assisted Living & Memory Care.

Offering an exclusive array of programs and technology focused on monitoring and improving health, we're working every day to help our residents live well, longer.



VSTBalance®

Falling is the number-one risk factor among senior citizens, often signaling a decline in health. VSTBalance® uses 3D technology to help visualize and assess the balance of residents, taking them through assessments that evaluate walking speed, range of motion and general mobility. Our wellness specialists can then develop personalized programs to help maintain strength and balance and prevent falls.



Music and Memory®

For residents living with Alzheimer's, dementia or memory loss, music can be a powerful tool for tapping into deep emotional recall, encouraging connections with memories and allowing them to engage more in the present. Our Music and Memory® specialists hold private and group sessions, keeping track of residents' progress by recording mood trends before and after sessions.



It's Never 2 Late®

IN2L is an innovative touchscreen computer system designed for Assisted Living residents, programmed for activities, games, therapy, reminiscing, music, virtual travel and more. Best of all, it is an easy way for residents to stay directly connected with family, friends and the world around them.



Constant Companion, ICCDP and Cen4ARD

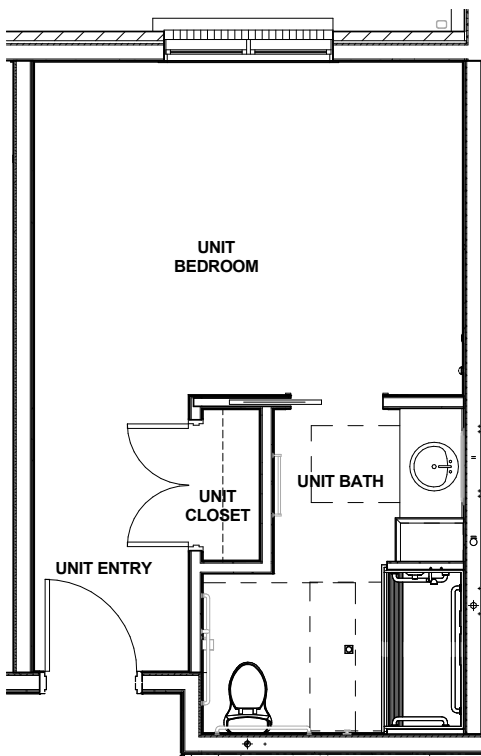
With Constant Companion, keeping seniors engaged and connected has never been easier. This secure, voice-activated system helps connect seniors to family, friends, nursing staff and entertainment. And through our partnerships with the International Council of Certified Dementia Practitioners and the Center for Applied Research in Dementia, we ensure our programs and facilities are held to the highest standards of excellence.



Exceptional Memory Care

Following the **Montessori Inspired Lifestyle®** approach, we focus on each resident's individual needs to improve outcomes and create a more engaged and fulfilled community. The Montessori approach to dementia care is person-centered and designed so our residents can maintain their highest possible level of independence with hands-on learning along with encouragement from our dedicated team of care partners and life enrichment team dedicated to memory care residents. We provide a supportive environment where residents are treated with respect, dignity and equality.

Our environment is intentionally prepared to provide residents the freedom to be independent as much as possible. Directional signage throughout the building reduces barriers in their daily activities. A prepared environment is a supportive environment.



Live Life Well

Explore and Enhance All Dimensions of Wellness

We support you in living life to the fullest. From morning exercise to live entertainment, from church services to guest lectures - learn how you can Live Life Well. Plus, our campus includes home-health partners, several physician teams on staff and even on-site physical, occupational and speech therapy.





Surround Yourself with Support

Our pricing is inclusive, and our care is exemplary.

We have a nurse in the building at all hours, so you can rest assured knowing that help is always steps away.

The care that we provide is tailored to meet each resident's individual daily needs, including medication management, bathing, clothing selection and dressing, grooming, participation in activities and much more.

Upon move-in, each resident will begin a care plan to determine individual needs and assistance required.

Your utilities, meals, internet, cable, shuttle services around campus and care are all built into your monthly fee. (You may also opt in to receive personal laundry service, private transportation, meal delivery, guest meals, salon services, etc. for an additional fee.)

You Can Live Worry-Free with Us!

We offer a library, exercise equipment and classes, high-speed internet access, on-site beauty/barber shop and a full-time Life Enrichment Director.

Our friendly staff provides weekly housekeeping and flat linen laundry service, a wide array of social and recreational activities and specialized programs for those managing memory issues. And, should you need it, you'll have priority access to skilled nursing at the consistently top-rated Friendship Village Skilled Nursing and Rehab.

A Trusted Name, An Outstanding Value

As a not-for-profit community, Friendship Village Chesterfield is operated by our own local management team and governed by a St. Louis-based Board of Directors. This means that our leadership has deep roots in the community.

With tenured staff who provide knowledge and expertise, we put the needs of our residents first. Our dynamic team is credited with delivering more than 45+ years of stability and experience in one of the highest-rated senior living communities in the country.



Call today to learn more about the *carefree* life
you could be enjoying right now!

(636) 591-1223



**Center for Applied
Research in Dementia**
Creating effective memory interventions.



**It's Never
2 Late** 
dignity through technology


VirtuSense
AI for Healthcare



Reserve your new home today.

15250 Village View Drive
Chesterfield, MO 63017
(636) 591-1223

FriendshipVillageSTL.com/assisted-living



A not-for-profit Life Care community by Friendship Village Senior Services.

